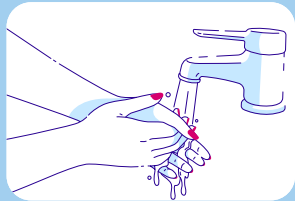


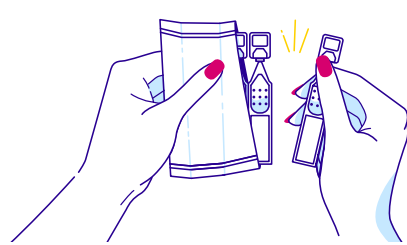
How to Use

**xiidra**[®]
(lifitegrast
ophthalmic solution)5%



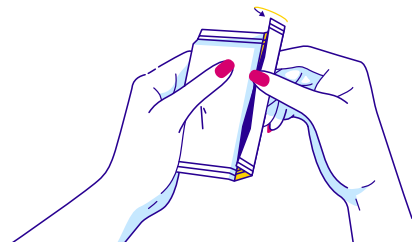
• Getting Ready

Before using Xiidra, it's important to wash your hands. And if you have contact lenses, take them out before using Xiidra. After opening a single-use container of Xiidra, use it right away. Do not save any unused Xiidra. For additional prep info, check out the Instructions for Use in the accompanying Prescribing Information.



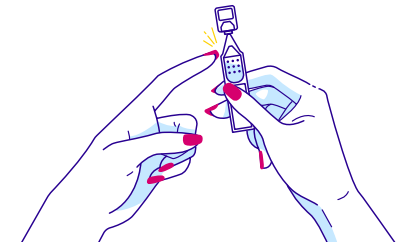
••••• 01. Take one container from pouch

Open the foil pouch and remove one single-use container from the strip. This one container will be used for both of your eyes.



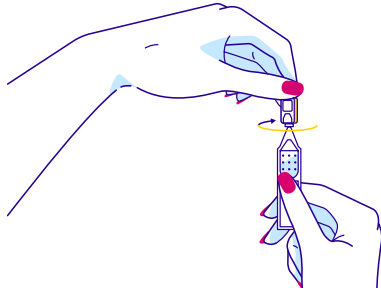
••••• 02. Save other containers for later

Store the remaining single-use containers back in the foil pouch to protect them from the light. Fold over the edge of the pouch to keep them secure.



••••• 03. Tap the container

Hold the Xiidra container upright and tap the top until the solution is in the bottom of the container.



••••• 04. Twist top to open

Twist off the top to open the container. To avoid contamination, make sure the tip of the container doesn't touch anything.



••••• 05. Tilt your head back, and pull your eyelid down

Tilt your head backwards or lie down. Then look up as you gently pull your lower eyelid down.



••••• 06. Gently squeeze one drop

Place the tip of the container close to (but not touching) your eye. Gently squeeze one drop from the container into the space between your lower eyelid and your eye. If you miss, don't worry—there's some extra solution in the container in case that happens, so you can try again.



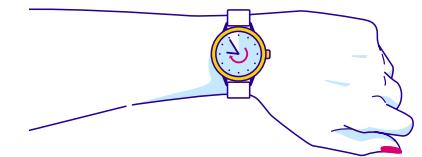
••••• 07. Repeat on your other eye

Using the same container of Xiidra, repeat steps 5 and 6 on your other eye. You only need one drop in each eye.



••••• 08. Finish up

Once you've applied one drop to both eyes, throw away the used container with any remaining solution. If you use contact lenses, wait 15 minutes before reinserting them.



••••• 09. You did it

Just repeat these steps approximately every 12 hours (morning and evening). Be sure to read the accompanying Instructions for Use. If you have any questions, talk to your eye doctor or visit www.UsingXiidra.com for a virtual demonstration of how to use Xiidra.



What is Xiidra?

Xiidra (lifitegrast ophthalmic solution) 5% is a prescription eye drop used to treat the signs and symptoms of dry eye disease.

Important Safety Information

Do not use Xiidra if you are allergic to any of its ingredients. Seek medical care immediately if you get any symptoms of an allergic reaction.

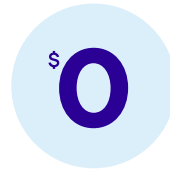
The most common side effects of Xiidra include eye irritation, discomfort or blurred vision when the drops are applied to the eyes, and an unusual taste sensation.

To help avoid eye injury or contamination of the solution, do not touch the container tip to your eye or any surface. If you wear contact lenses, remove them before using Xiidra and wait for at least 15 minutes before placing them back in your eyes.

It is not known if Xiidra is safe and effective in children under 17 years of age.

You are encouraged to report negative side effects of prescription drugs to the FDA. Visit www.fda.gov/medwatch, or call 1-800-FDA-1088.

For additional safety information, click [here](#) for Full Prescribing Information and Patient Information and discuss with your doctor.



Want Savings?

Eligible commercially insured patients may pay as little as \$0 Co-pay*

*Limitations apply. Eligible, commercially insured patients using the Co-pay Card pay \$0 for their first 30-day, 60-day, or 90-day prescription of Xiidra. After the first fill, eligible, commercially insured patients may pay as little as \$0 for prescriptions of Xiidra, subject to a maximum monthly savings of \$250 for a 30-day prescription and \$750 for a 90-day prescription. Offer not valid under Medicare, Medicaid, or any other federal or state program. Bausch + Lomb reserves the right to rescind, revoke, or amend this program without notice. See complete Terms & Conditions for details.



Scan the QR Code to learn more.



Want Personalized Support?

Join the Xiidra insider program for helpful resources and personalized support to help you throughout your treatment journey—including helpful tips, chronic dry eye facts, savings information, and refill reminders.



Text **SAVINGS** to **48321** or scan the QR code and press send to sign up.



Want to Learn More?

Visit Xiidra.com/xiidra-cost to learn more about Xiidra savings and support programs, including Medicare coverage, financial assistance, co-pay reimbursement, and more!